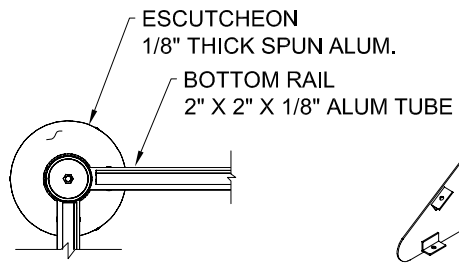


THIS DRAWING HAS BEEN GENERATED AND IS MAINTAINED BY A CAD SYSTEM. CHANGES SHALL ONLY BE INCORPORATED AS DIRECTED BY TOLAR MANUFACTURING CO., INC.'S ENGINEERING DEPT.

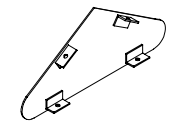
GENERAL NOTES:

1. ALL STRUCTURAL STEEL, UNLESS OTHERWISE NOTED, SHALL BE ASTM A-36, MINIMUM YIELD STRENGTH 36,000 PSI.
2. ALL ALUMINUM MEMBERS, UNLESS OTHERWISE NOTED, SHALL BE OF ALLOY 6063-T5.
3. ALL HOLES SHALL BE DRILLED OR PUNCHED.
4. STEEL WELDING SHALL CONFORM TO AMERICAN WELDING SOCIETY STANDARD D1, 1-98. ELECTRODES SHALL CONFORM TO AWS A5.1, CLASS E70XX.
5. ALUMINUM WELDING SHALL CONFORM TO AMERICAN WELDING SOCIETY STANDARD D1, 2-97. ELECTRODES SHALL CONFORM TO AWS/SFA 5.10 CLASS ER4043.
6. ALL WELDING TO BE DONE AT TOLAR MANUFACTURING CO. INC. FACILITY.

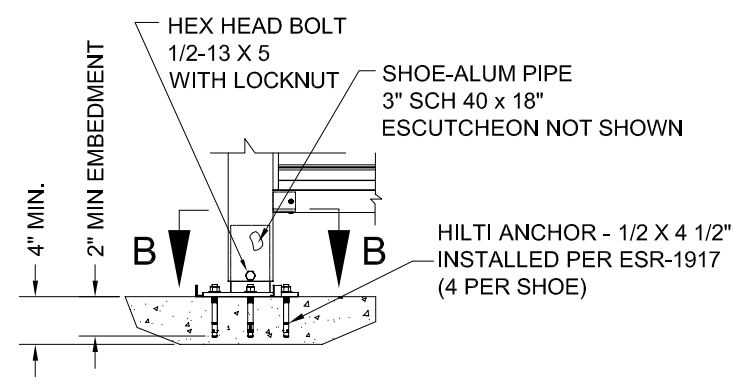
REVISIONS				
ZONE	REV	DESCRIPTION	DATE	APPROVED



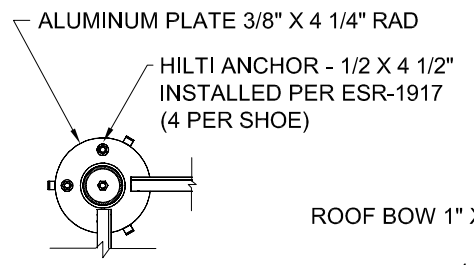
SECTION A-A
SCALE: 1"=6"



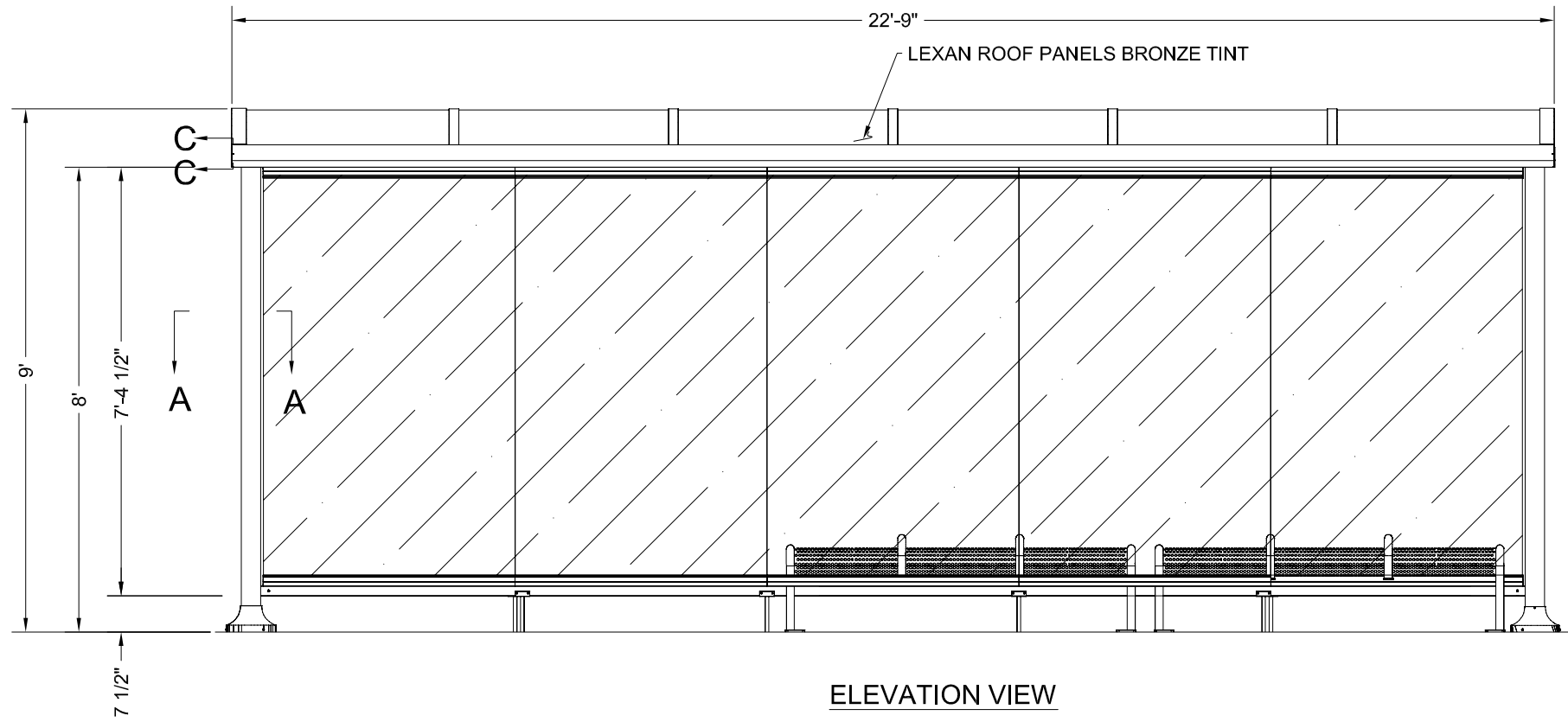
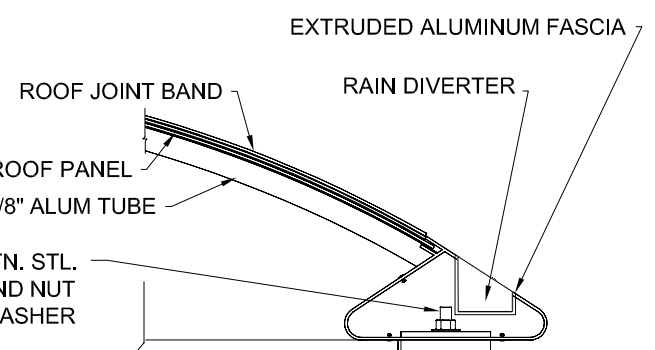
SECTION C-C
SCALE: 1"=6"



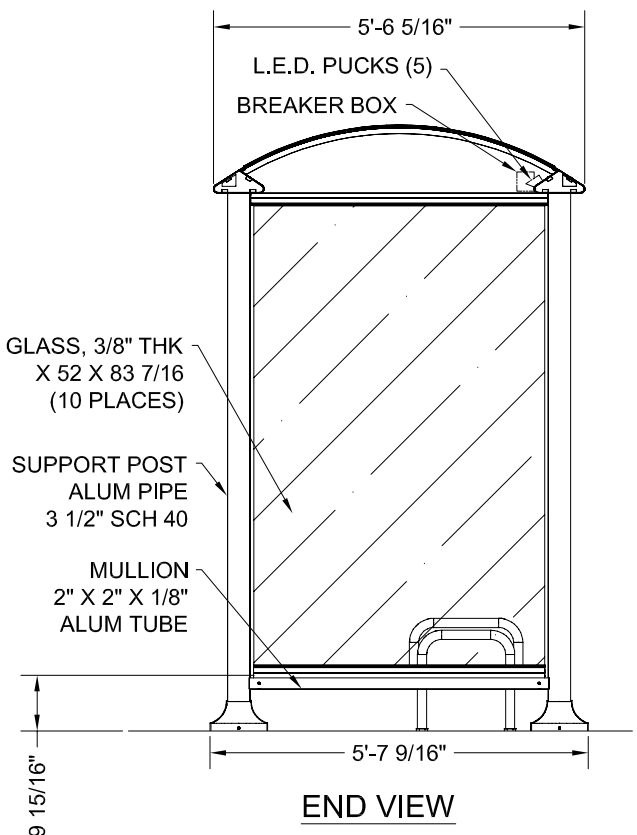
ANCHORING DETAIL
SCALE: 1"=6"



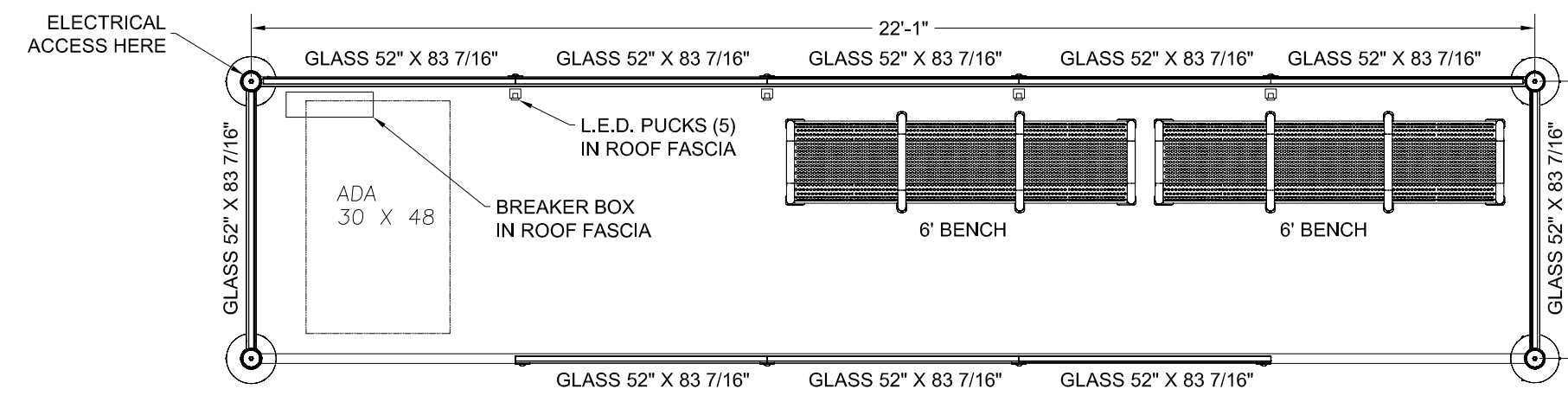
SECTION B-B
SCALE: 1"=6"



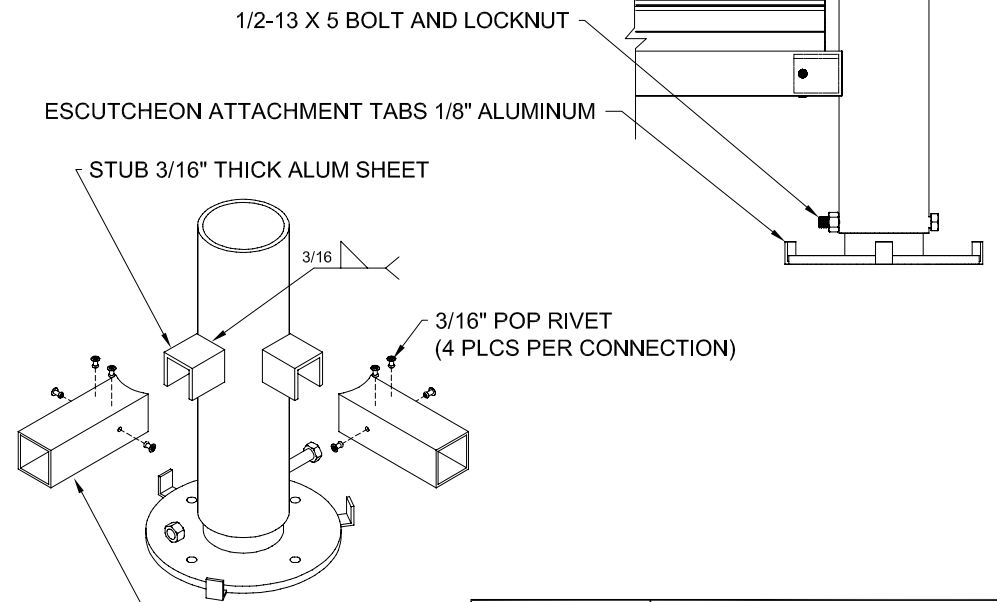
ELEVATION VIEW



END VIEW



ELEVATION VIEW-SHOWN WITHOUT ROOFING



MULLION / CORNER POST CONNECTION TYP.

Tolar Manufacturing Company, Inc 258 Mariah Circle, Corona, CA 92879	
DESCRIPTION	ELEV. DWG, 22' NALD EURO STYLE
CUSTOMER/VENDOR	M.I.T.
SIZE	DWG NO. 10268-00
SCALE	DATE 02/02/09
DRAWN BY:	EM