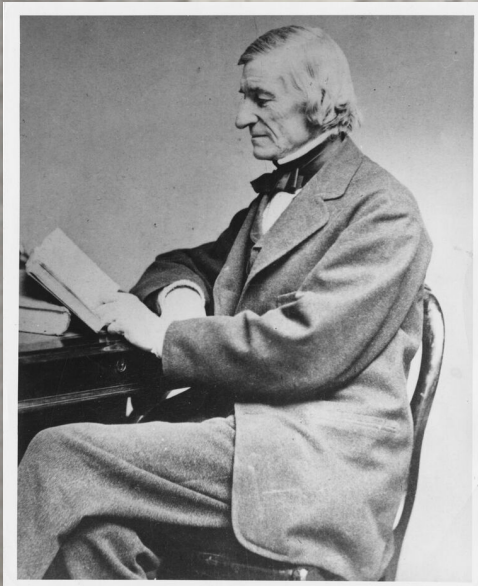


THE PRESIDENT AND THE SHASS DEAN PRESENT A NEW COURSE:

21H-S01

# MIT & SLAVERY

MONDAYS, 3-5PM, and WEDNESDAYS (RECITATION), 3-4PM



William Barton Rogers, who founded MIT in 1861

Universities and colleges in the Americas and Europe are examining their historical ties to the Atlantic slave trade and slavery. The Massachusetts Institute of Technology is commencing research on how technical institutions fit into this past. This undergraduate research course explores the influence of slavery and race on MIT's founding and early development, and the connections between slavery and the rise of the sciences and engineering. **Students will have their research projects published through the MIT & SLAVERY website, hosted by the MIT Libraries.**

Instructors:

Craig Steven Wilder, Professor of History

Nora Murphy, MIT Archivist

[libraries.mit.edu/mit-and-slavery](http://libraries.mit.edu/mit-and-slavery)