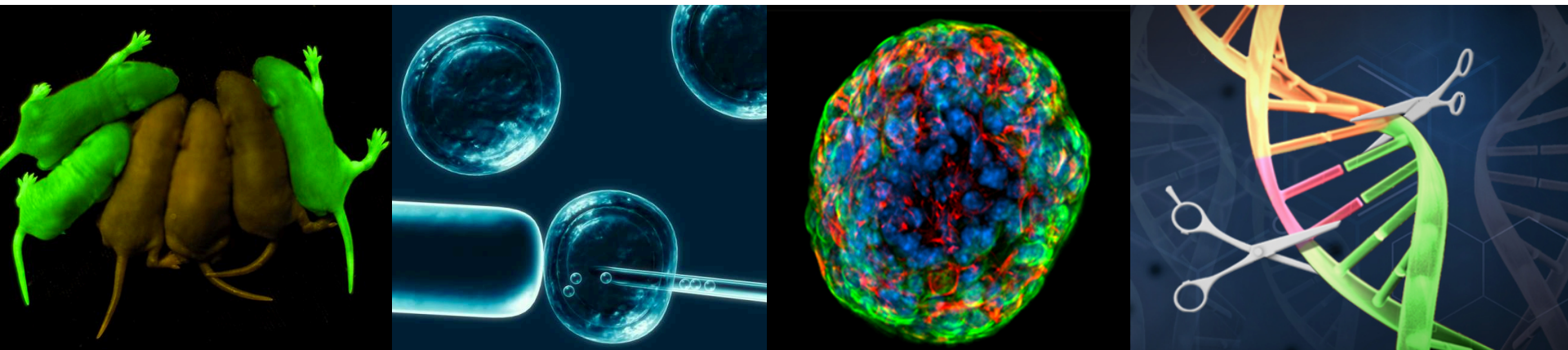


ONE CELL TO RULE THEM ALL

SIGN UP FOR SPRING 2015

The course will introduce the field of stem cell biology and genome engineering through critical reading of both the classical and newest primary research literature. We will focus on the methods behind embryonic and induced pluripotent stem cells, genome editing to create transgenic animal models of human diseases, regenerative medicine and current hot topics in genome engineering such as CRISPR. In addition, this course will discuss specific disease model systems and their benefits/limitations for understanding the disease and treating human patients.



For more details

**7.342 Pluripotent Stem Cells and
Genome Engineering for Modeling
Human Diseases**

Spring 2015. Wednesdays, 1 pm – 3 pm.
(Class day and time are flexible)
Room 68-150



Instructors:

Malkiel Cohen malkiel@wi.mit.edu

Katherine Wert wert@wi.mit.edu

Laboratory of Rudolf Jaenisch