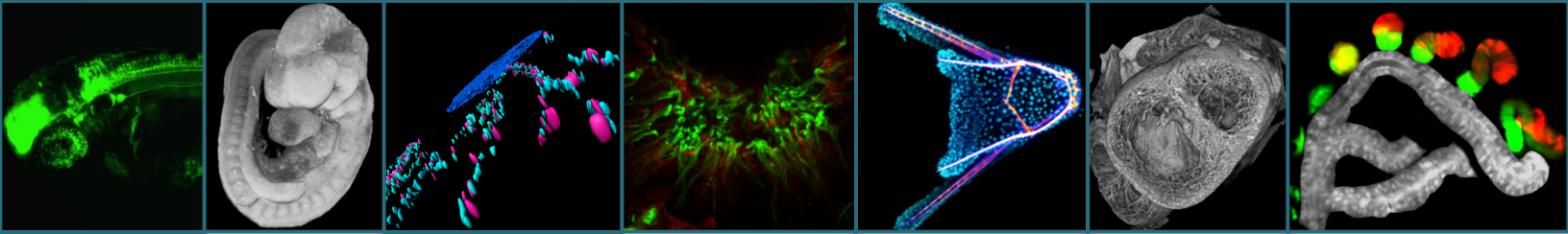


ISB INTEGRATIVE SYSTEMS BIOLOGY

University of Pittsburgh



The **Integrative Systems Biology (ISB)** graduate program provides an exciting, innovative and vigorous academic environment for training highly motivated biomedical students and prepare them for a systems biology research career in academic institutions and industry.

Why choose ISB for your graduate education?

Biology, Medicine, & Computer Science

- Deconvolute complex biological processes
- Unravel molecular basis of disease
- Translate into clinical practice

Rigorous Training

- Quantitative and systems approaches course
- Basics of biostatistics and programming
- Integrate systems biology concepts with molecular approaches

Innovative Externships

- Academic and Clinical Research
- Biotech/Pharma
- Science Writing
- Intellectual Property

Major Research Areas

- Developmental Biology
- Cell & Systems Biology
- Genes and Evolution
- Translational Medicine
- Quantitative Drug Discovery

Focused – Accelerated – 4 Year PhD Program

The Faculty : The ISB faculty includes highly regarded, well-funded scientists with history of excellence in graduate training from University of Pittsburgh and Carnegie Mellon University (CMU), two leading research and educational institutes. Our faculty conduct integrative science that cuts across multiple disciplines, employs multiple scientific approaches, and is ideal for students that seek research that is free of traditional boundaries.

The Universities : The University of Pittsburgh ranks 5th among all biomedical research universities in competitive grants awarded by the National Institutes of Health. Carnegie Mellon University has a international reputation in cross-disciplinary bioscience and biotechnology. The Universities and the City of Pittsburgh provides you with a multitude of diverse research and recreational activities.

The Facilities : The University of Pittsburgh has modern facilities and state-of-the art research centers, and first-class resources, including those for advanced imaging, computation, and cores to assist with the study of cell, developmental, and structural biology.

The Benefits : Upon admission you will receive a competitive stipend to cover your living expenses. In addition to the stipend, you will receive complete tuition remission, an educational enrichment fund, and health insurance.

To apply, visit us at: www.isb.pitt.edu (Deadline, January 15, 2015)