



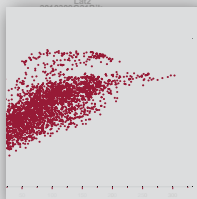
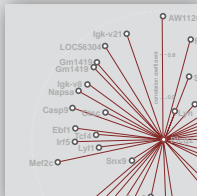
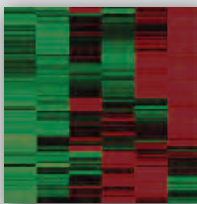
CBDM Laboratory

Section on Immunology and Immunogenetics
Joslin Diabetes Center
Harvard Medical School
1 Joslin Place
Boston, MA 02215



BIOINFORMATICS RESEARCH ASSISTANT

Opening for a **Bioinformatics Research Assistant** working in computational analysis of gene expression data related to autoimmune diseases.



Molecular Immunologists in the Benoist/Mathis laboratory apply high-throughput techniques to elucidate the basic mechanisms of immune tolerance and autoimmunity. We are particularly interested in the application of DNA micro-array technology to understand the network of genetic interactions that control immune responses. These studies creates very large sets of multidimensional data, which require sophisticated computational analyses to recognize patterns and gene clusters, as well as novel representations to display these results.

Together with biologists and computational scientists in the lab, you will use and develop software tools to decipher and portray these data, guide and train biologists in the lab in the use of these computational techniques. You may also participate in the development of data warehouse structures for data integration and mining, in relation with other computational biologists in the Joslin Diabetes Center's Bioinformatics Core and with other Bioinformatics groups on campus.

We are seeking individuals with a solid foundation in computer sciences and programming, with knowledge of tools such as C++, PERL, S+, R, Java, open-source or proprietary SQL. A BS with a major in computer sciences is required. Some biological background would be useful, but not essential.

Contact : Larry Kozinn
Phone: 617 264 2745
larry.kozinn@joslin.harvard.edu
Fax: 617 264 2744
<http://cbdm.joslin.harvard.edu>